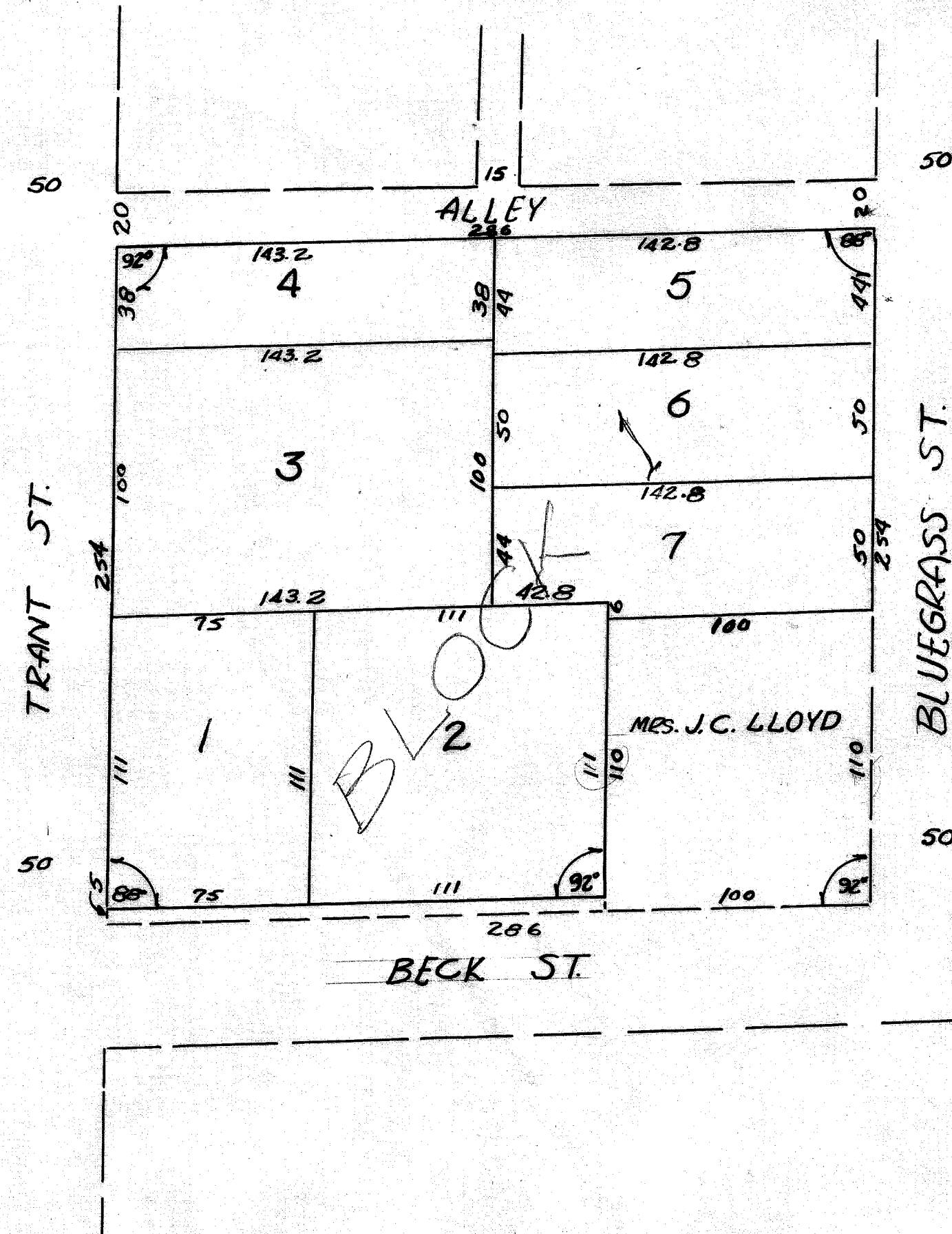


TRANT ADDITION

TO THE CITY OF BRYAN, TEXAS
SUBDIVISION OF BLOCK NO. 1 (OF
MEGEE - BUCKHALTS ADDITION)
D.R.: VOL. 155, PG. 291 AUG. 12, 1952

SCALE 1" = 100'
1" = 50'

MEGEE - BUCKHALTS ADDITION



MYERS ADDITION

BLUEGRASS ST.

TRANT ST.

BECK ST.

359

one bar
up
10/1/52